



Gloucestershire
Wildlife Trust

Did you know....
A nature recovery network has been
mapped for all of Gloucestershire?





Gloucestershire
Wildlife Trust

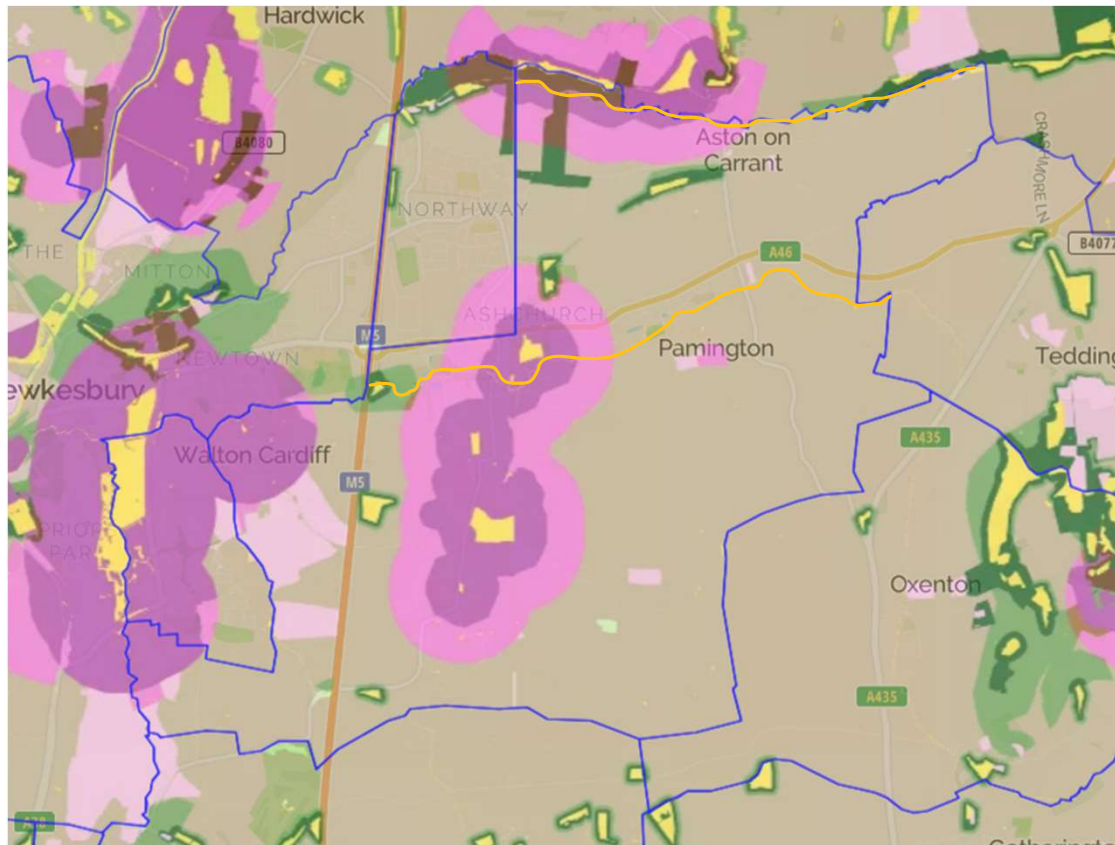
[The map](#) shows where important existing habitats are and how we can extend these to help restore nature across the county and more widely...





Gloucestershire
Wildlife Trust

This is the map for Ashchurch Rural



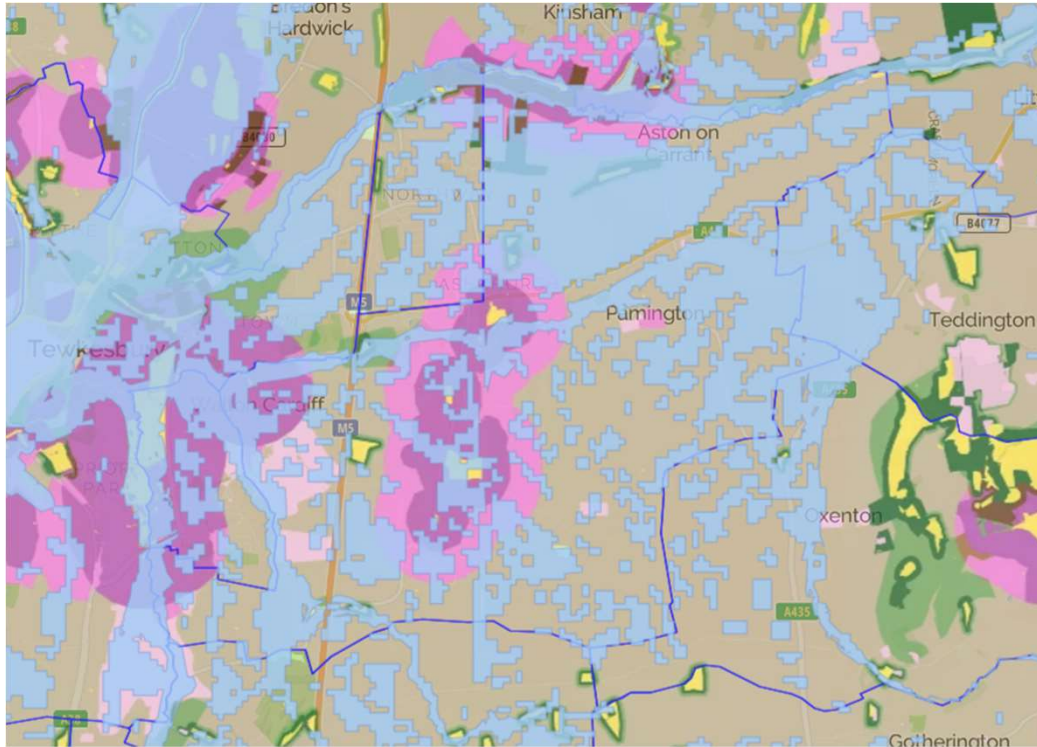
The yellow areas are existing core habitats. All other colours demonstrate 'opportunity areas' to expand habitats. The purple areas show opportunities for grassland habitats and the green areas for woodland habitats. The darker the shade, the higher the opportunity.

This map is public so please take a look. Simply search for nature recovery map for Gloucestershire and click on mapping.



Gloucestershire
Wildlife Trust

The map also shows opportunities for new wetland creation (blue areas). As you can see, this includes a large proportion of the parish...



But why do these maps matter?....



Gloucestershire
Wildlife Trust

These maps will form a core part of Gloucestershire's Local Nature Recovery Strategy, which central government requires every county across England to develop. This is an important consideration in development planning....

The key planning policy document for England, the National Planning Policy Framework states:

'To protect and enhance biodiversity and geodiversity, plans should: a) Identify, map and safeguard components of local wildlife-rich habitats and wider ecological networks.....including wildlife corridors and stepping-stones that connect them; and areas identified by national and local partnerships for habitat management, enhancement, restoration or creation;

and b) promote the conservation, restoration and enhancement of priority habitats, ecological networks and the protection and recovery of priority species; and identify and pursue opportunities for securing measurable net gains for biodiversity.'





Gloucestershire
Wildlife Trust

So what has the Neighbourhood Development Plan got to do with this?

The new NDP will include policies to protect and enhance areas of key ecological importance as identified on these maps. It will establish the need for a substantial amount of wetland habitat creation in the parish, providing new habitats and creating natural flood attenuation.

Once designated, these new policies will have to be taken into account in any future development plans and decisions.





Gloucestershire
Wildlife Trust

Making future development in Ashchurch Rural greener...

The new NDP will also include policies on access to green space, to make sure that new development includes high-quality spaces that benefit both nature, health and well-being.





Gloucestershire
Wildlife Trust

We're here today because we want to make sure we have the best understanding of nature and habitats in the parish, and nobody knows an area like the people who live in it!

We also want to know what your priorities are for nature and greenspaces, so we can make sure our recommendations reflect these.

We are very grateful for your time and want to thank you for supporting us in this work.

